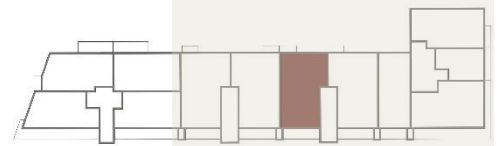
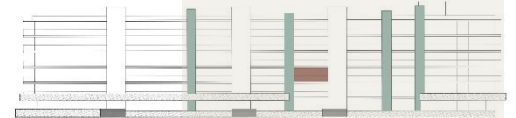


# EDIFÍCIO VERDOMAR

PONTA DELGADA

AC

T3\_PISO 2  
131.2 M<sup>2</sup> HABITAÇÃO  
+ 24.7 M<sup>2</sup> VARANDA



## MATERIAIS :



FACHADA \_ AREADA , PINTADA,  
COMPÓSITO, BASALTO



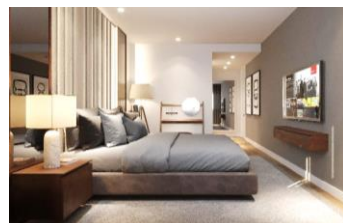
PAVIMENTOS\_MULTICAMADAS  
CARVALHO, CERÂMICOS, BETÃO COM  
PINTURA EPOXY, LAJETAS PRÉ-  
FABRICADAS BETÃO



PAREDES\_ GESSO CARTONADO,  
CERÂMICO



TETOS\_ GESSO CARTONADO, BETÃO  
APARENTE



## ÁREA ÚTIL:

ENTRADA	4.0 M <sup>2</sup>
SALA	32.6 M <sup>2</sup>
COZINHA	10.5 M <sup>2</sup>
IS SOCIAL	2.0 M <sup>2</sup>
LAVANDARIA	2.2 M <sup>2</sup>
DISTRIBUIÇÃO	3.9 M <sup>2</sup>
QUARTO 01	15.5 M <sup>2</sup>
IS 01	5.0 M <sup>2</sup>
QUARTO 02	12.2 M <sup>2</sup>
IS 03	3.5 M <sup>2</sup>
QUARTO 03	15.7 M <sup>2</sup>
IS 03	3.9 M <sup>2</sup>